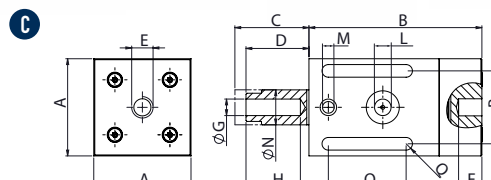
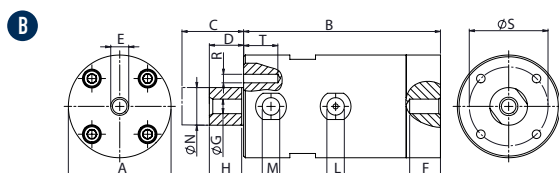
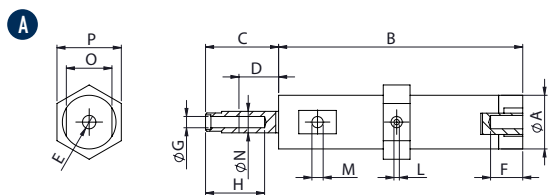




# F - Linear pneumatic vibrators - Adjustable cushioned



DIMENSIONAL SPECIFICATIONS

MODEL	DRAW.	A		B		C		D		E		F		G		H		I		L		M		N		O		P		Q		R		S		T		WEIGHT	
		mm	in	mm	in	mm	in	mm	in	mm	in	mm	in	mm	in	mm	in	mm	in	mm	in	mm	in	mm	in	mm	in	mm	in	mm	in	mm	in	mm	in	kg	lb		
F8	A	20	0.8	91	3.6	30	1.2	5	0.2	M6	10	0.4	M5	20	0.8	7	0.3	M5		M5	8	0.3	17	0.7	24	0.9	/	/	/	/	/	/	/	/	/	/	0.1	0.2	
F15	B	50	2.0	115	4.5	41	1.6	7	0.3	M10	15	0.6	M10	15	0.6	13	0.5	1/8" BSPP		1/8" BSPP	15	0.6	12	0.5	/	/	36	1.4	M6	18	0.7	36	1.4	1.5	3.3				
F15P	B	50	2.0	115	4.5	39	1.5	9	0.4	M10	15	0.6	M10	22	0.9	13	0.5	1/8" BSPP		1/8" BSPP	16	0.6	/	/	/	/	/	/	M6	12	0.5	36	1.4	0.5	1.1				
F18	C	50	2.0	89	3.5	32	1.3	10	0.4	M10	10	0.4	M10	26	1.0	12	0.5	1/8" BSPP		1/8" BSPP	18	0.7	40	1.6	38	1.5	7	0.3	/	/	/	/	/	/	0.6	1.3			
F25	B	60	2.4	115	4.5	45	1.8	10	0.4	M10	15	0.6	M10	15	0.6	19	0.8	1/4" BSPP		1/4" BSPP	22	0.9	15	0.6	/	/	46	1.8	M6	18	0.7	46	1.8	2.3	5.1				
F40	B	85	3.4	140	5.5	57	2.2	13	0.5	M16	17	0.7	M16	20	0.8	36	1.4	1/4" BSPP		3/8" BSPP	40	1.6	20	0.8	/	/	65	2.6	M6	16	0.6	65	2.6	5.7	12.5				
F85	B	160	6.3	122	4.8	52	2.1	22	0.9	M20	30	1.2	M20	30	1.2	/	/	3/8" BSPP		2x3/8" BSPP	85	3.3	/	/	/	/	/	/	M6	17	0.7	140	5.5	16.5	36.3				

MODEL	2 bar								4 bar								6 bar							
	VIBRATION		FORCE		WORKING MOMENT		AIR CONSUMPTION		VIBRATION		FORCE		WORKING MOMENT		AIR CONSUMPTION		VIBRATION		FORCE		WORKING MOMENT		AIR CONSUMPTION	
	V/min	N	Lb	kgcm	inlb	U/min	cfm	V/min	N	Lb	kgcm	inlb	U/min	cfm	V/min	N	Lb	kgcm	inlb	U/min	cfm			
F8	2020	2.2	0.5	0.04	0.04	7	0.2	2950	5.1	1.1	0.04	0.04	19	0.7	3600	7.7	1.7	0.04	0.04	28	1.0			
F15	2280	10.8	2.4	0.16	0.15	20	0.7	2520	17.6	4.0	0.22	0.19	38	1.3	2820	22.0	5.0	0.22	0.19	67	2.4			
F15P	1920	9.7	2.2	0.21	0.18	20	0.7	2160	16.3	3.7	0.29	0.25	42	1.5	2340	19.4	4.4	0.29	0.25	80	2.8			
F18	2070	17.9	4.0	0.34	0.29	29	1.0	2520	26.5	5.9	0.36	0.31	55	1.9	3300	47.8	10.8	0.36	0.31	100	3.5			
F25	1860	19.8	4.5	0.46	0.40	32	1.1	2040	28.4	6.4	0.56	0.48	60	2.1	2220	34.0	7.6	0.56	0.48	105	3.7			
F40	1380	46.1	10.4	1.96	1.70	80	2.8	1560	74.5	16.7	2.49	2.15	190	6.7	1740	92.8	20.9	2.49	2.15	320	11.2			
F85	1680	220.9	49.7	6.36	5.50	240	8.4	1980	358.1	80.5	7.42	6.42	390	13.7	2280	475.0	106.7	7.42	6.42	580	20.4			

## F - LINEAR PNEUMATIC VIBRATORS - ADJUSTABLE CUSHIONED

APPLICATION Vibrating feeder - table and channel

POWDER Hygroscopic - dusty and granular

PROBLEM SOLVING Detaching and compacting

## FEATURES

DUTY CYCLE Continuous

WORKING PRESSURE From 2 bar to 6 bar [from 29 psi to 87 psi]

PNEUMATIC CIRCUIT Filter + flow control valve + lubrication + 3/2 ways valve

AIR SUPPLY QUALITY Class 5.4.4. | F15P - F18Q class 5.4.1

WORKING TEMPERATURE From -20 °C to 200 °C [from -4 °F to 392 °F] | F15P - from -20 °C to 100 °C [from -4 °F to 212 °F]

MAX NOISE LEVEL 80 dB(a)

TECHNOLOGY Piston pneumatic cushioned

ATEX II 2D C TX  
II 2G C TX

MATERIAL Grey cast iron body (powered painted)  
F15P: nylon body and aluminium cover  
F18: aluminium body (square shape)



This information is furnished without warranty, representation, inducement or license of any kind. It is accurate to the best OLI knowledge or is obtained from sources believed to be accurate. OLI therefore assumes no legal responsibility.