



# Loading Bellows

The Loading Bellows are meticulously designed to help the controlled transfer of bulk materials, containing dust during transfer to enclosed or open storage areas.

## FEATURES

Optionally, a filter with a fan system can be integrated to collect dust for reuse and prevent environmental pollution. Loading bellows, with both inner and outer bellows, are available in two types for closed tank/silo-truck loading and open truck loading. The inner and outer bellows are crafted from flexible, oil-repellent, and chemical-resistant rubber-coated PVC.



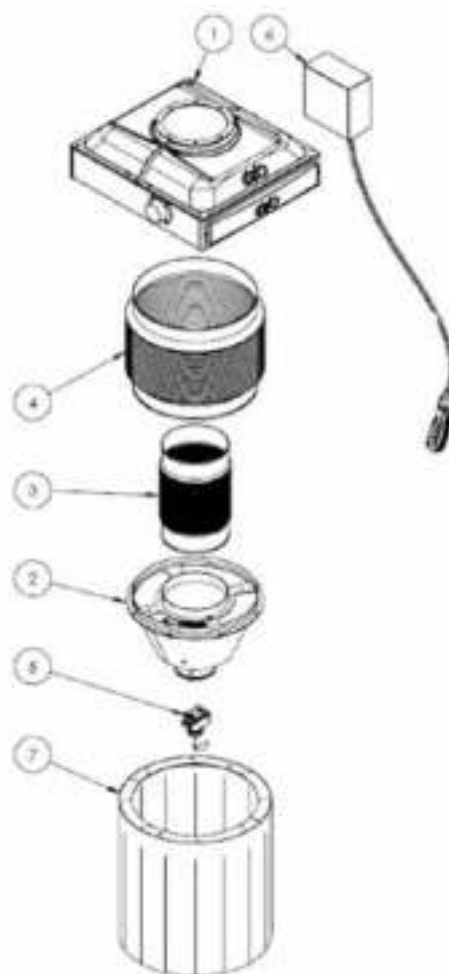
## TECHNICAL INFORMATION (WITHOUT FILTER)

Inlet Diameter	300mm
Max Capacity	250m <sup>3</sup> /h
Inner and Outer Bellow	Rubber coated PVC
Drive Group	0.75kW
Electric Panel and Push Button	Optional
Filter & Fan	Not included (Available separately)
Limit Switch for Retracted and Extended Position	Included
Level Indicator	230VAC rotating paddle type, included
Operating Temperature	Nominal -40°C/+90°C

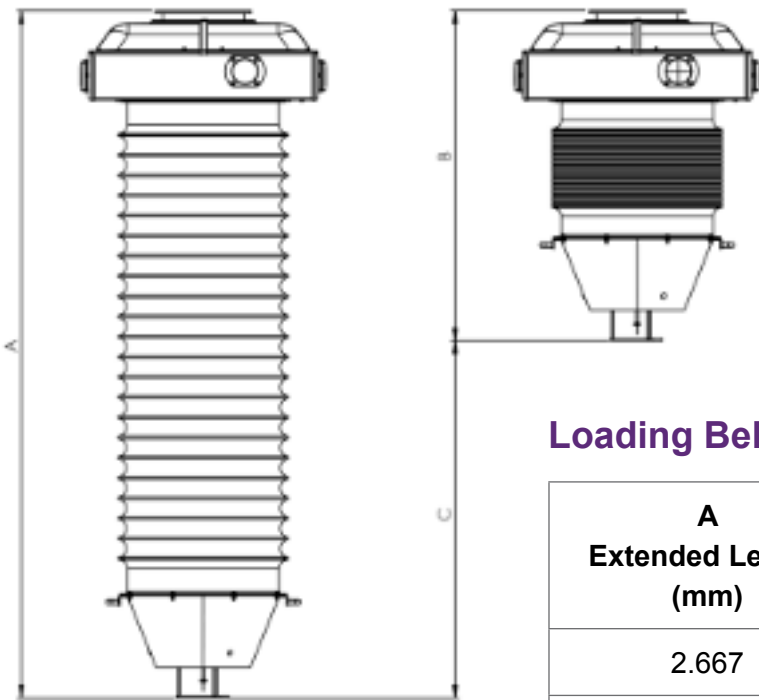
The Loading Bellows, with its comprehensive technical specifications, offers efficient material transfer while addressing environmental concerns and ensuring operational flexibility.

## COMPONENTS

1. Upper body
2. Bottom cone
3. Inner bellow
4. Outer bellow
5. Level indicator
6. Electric panel and push button

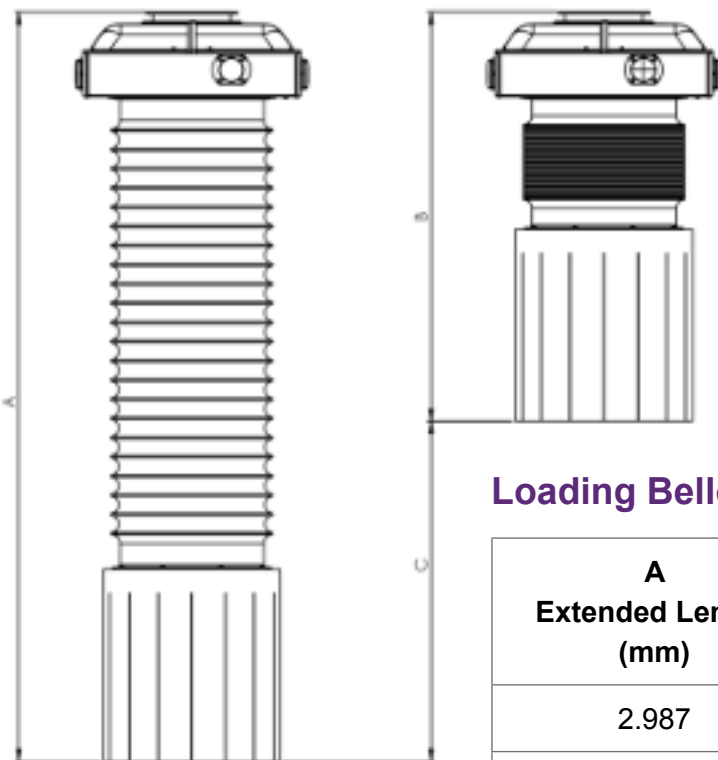


## OVERALL DIMENSIONS



**Loading Bellows without Filter for Silobus**

<b>A</b> Extended Length (mm)	<b>B</b> Retracted Length (mm)	<b>C</b> Stroke (mm)
2.667	1.182	1.485
3.567	1.352	2.215



**Loading Bellows without Filter for Open Truck**

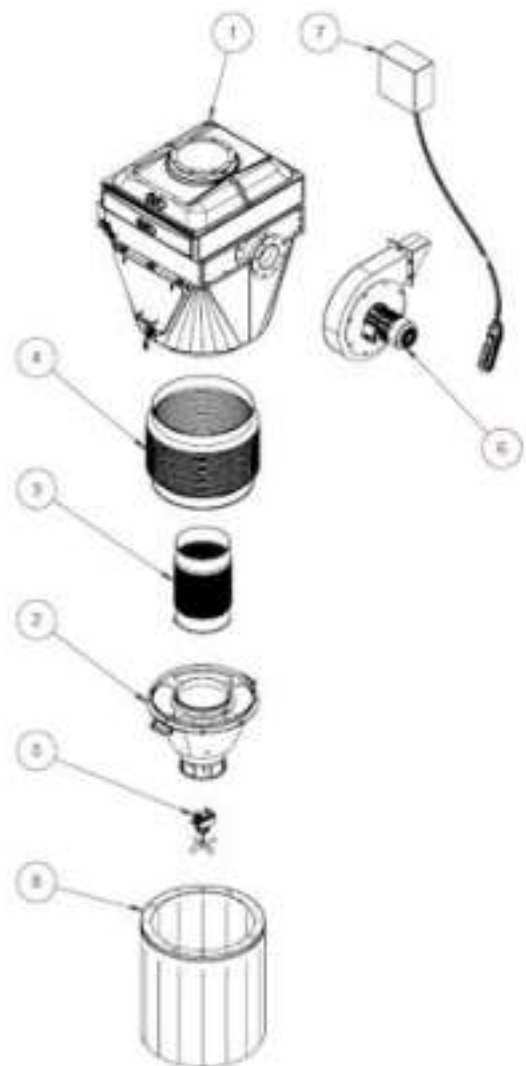
<b>A</b> Extended Length (mm)	<b>B</b> Retracted Length (mm)	<b>C</b> Stroke (mm)
2.987	1.502	1.485
3.887	1.672	2.215

## LOADING BELLOWS WITH FILTER (NEW DESIGN)

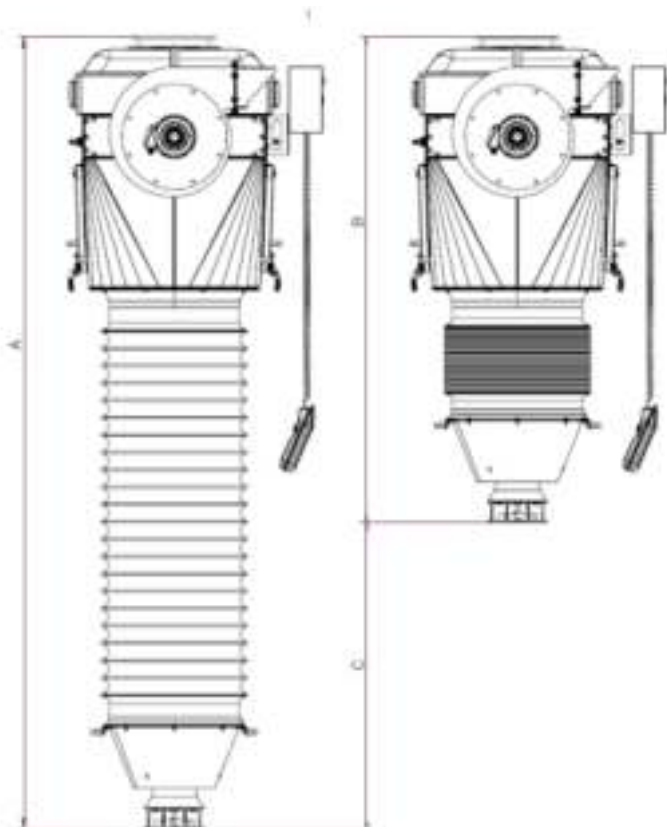
Inlet Diameter	300mm
Max Capacity	250m <sup>3</sup> /h
Inner and Outer Bellow	Rubber coated PVC
Drive Group	0.75kW
Electric Panel and Push Button	Optional
Filter & Fan	Nominal 10m <sup>2</sup> with 2.2Kw fan
Limit Switch for Retracted and Extended Position	Included
Level Indicator	230VAC rotating paddle type
Operating Temperature	Nominal -40°C/+90°C

## COMPONENTS

1. Upper body and filter unit
2. Bottom cone
3. Inner bellow
4. Outer bellow
5. Level indicator
6. Fan
7. Electric panel and push button
8. Skirt (only for model open tank loading)

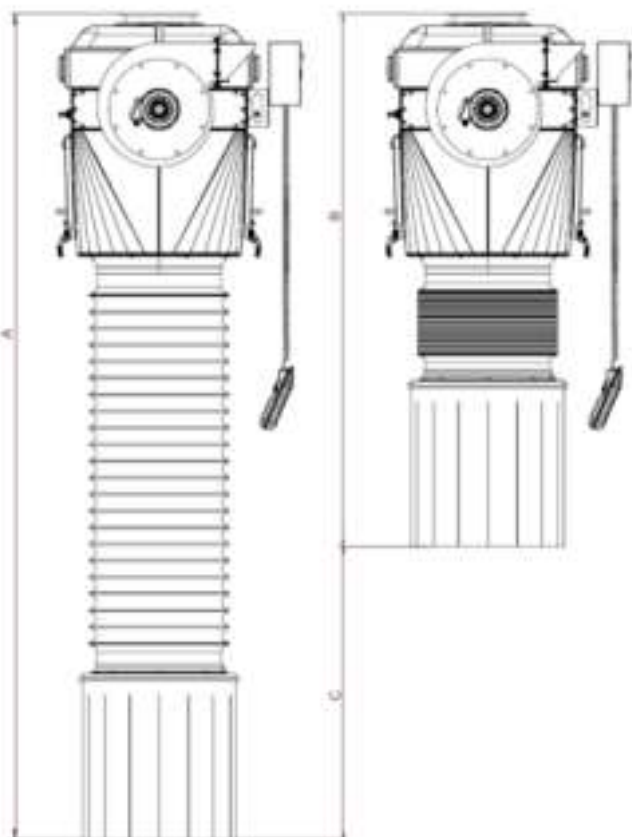


## OVERALL DIMENSIONS



### Loading Bellows with Filter for Silobus

A Extended Length (mm)	B Retracted Length (mm)	C Stroke (mm)
3.650	2.240	1.410
4.560	2.415	2.145



### Loading Bellows with Filter for Open Truck

A Extended Length (mm)	B Retracted Length (mm)	C Stroke (mm)
3.970	2.560	1.410
4.880	2.735	2.145