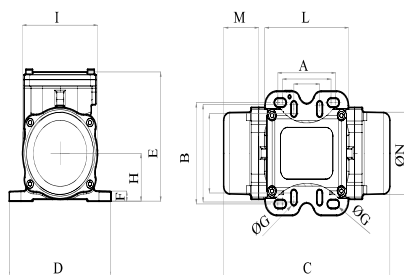




MVE 290/6N-HF-10A0 (EN40029010A0BA0000)

3 PH - 4 poles - 6000 RPM - 220-240/400-460 V - 200 Hz

Working moment (Kg*cm)	Unbalance (Kg*cm)	Centrifugal force (Kg)	Nominal voltage (V)	Input power (kW)	Current (A)	Power Factor	Ia/In
1,47	0,74	294	220-240/400-460	0,27	Δ 0,92 Y 0,53	0,75	2



OVERALL DIMENSIONS (mm)																
Weight (Kg)	A	A1	B	B1	G	G1	Holes number	C	D	E	F	H	I	L	M	N
4,6	62-74	33	106	83-102	9	7	4	213	130	135	10,5	50	96	107	45	85

TECHNICAL FEATURES						
Type of grease	Greased for life	Screw	Washer	Clamping torque (Nm)	Cable type	Cable gland
/	Yes	M8-M6	8,4 x 16-6,4 x 12 mm	23-9	4G1.5 80°C	M16 80°C

BEARINGS				
Bearing model	Type	Life 100%	Life 80%	Life 50%
6202 2Z		/	/	/

CERTIFICATION	
Atex II 3D Ex tc IIIc Tx IP66 [Tx Size 10-30:100°C - Tx Size 40-91:135°C] T.Amb -20/+40°C	

REV1-24/10/2019