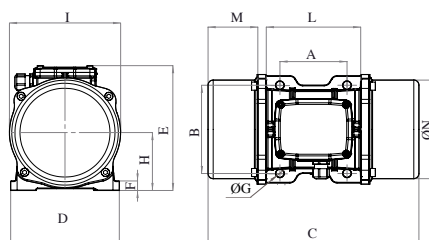




MVE 1300/6N-HF-50A0 (EN20130050A0HB0000)

3 PH - 2 poles - 6000 RPM - 220-240/400-460 V - 100 Hz

| Working moment [Kg*cm] | Unbalance [Kg*cm] | Centrifugal force [Kg] | Nominal voltage [V] | Input power [kW] | Current [A] | Power factor | Ia/In |
|------------------------|-------------------|------------------------|---------------------|------------------|---------------|--------------|-------|
| 7,32 | 3,66 | 1.474 | 220-240/400-460 | 1,3 | Δ 4,22 Ψ 2,44 | 0,77 | |



*Technical drawings are illustrative purposes only, please refer to 2D/3D drawings available on "FINDER" app. Contact us for more information.

| OVERALL DIMENSIONS [mm] | | | | | | | | | | | | | |
|-------------------------|-----|-----|----|--------------|-----|-----|-----|----|----|-----|-----|----|-----|
| Weight [Kg] | A | B | G | Holes number | C | D | E | F | H | I | L | M | N |
| 21,7 | 120 | 170 | 17 | 4 | 321 | 208 | 210 | 22 | 96 | 185 | 192 | 62 | 170 |

| TECHNICAL FEATURES | | | | | | |
|---------------------|------------------|-------|------------|----------------------|------------|-------------|
| Type of grease | Greased for life | Screw | Washer | Clamping torque [Nm] | Cable type | Cable gland |
| KLUBER ISOFLEX NB52 | Yes | M16 | 17 x 30 mm | 210 | 4G2.5 80°C | M25 120°C |

| BEARINGS LIFE HOURS | | | | |
|---------------------|------|----------|---------|---------|
| Bearing model | Type | 100% C.F | 80% C.F | 50% C.F |
| NJ 306 | | / | / | / |

| CERTIFICATION | |
|---|--|
| Atex II 3D Ex tc IIIc Tx IP66 [Tx Size 10-30:100°C - Tx Size 40-91:135°C] T.Amb -20/+40°C | |

REV.3-24/10/2019

Dimension with coarse degree of accuracy related to UNI 22768/1 Rights reserved to modify technical specifications.



PO Box 111, Charlestown NSW 2290
Unit 7/8 Kilcoy Drive, Tomago NSW 2322
P: 1300 026 011 | E: graham@bulkquip.com.au
www.bulkquip.com.au