



OZB AIRFILL 25 & AIRFILL 36

SILO VENT DUST COLLECTORS

AIRFILL brand filters excel in effective particle filtration, specifically designed to curtail particle dispersion during bulk solid transfers to enclosed stocking areas. Ranging from 6m² to 36m², these filters come in body diameters of 400mm, 600mm, and 800mm, offering adaptability to diverse requirements. Featuring a stainless-steel body, weather protection cover, cartridge-type filter element, and easily accessible external valves, AIRFILL filters prioritise reliability and straightforward maintenance. Standard silo mounting flanges ensure seamless integration, while optional upgrades like a stainless-steel seal frame and custom silo flanges allow for further customisation. Complementing the filter lineup, AIRFILL provides comprehensive solutions with filter hoppers and fans, presenting a holistic approach to efficient and dependable particle filtration.



Cleaning Excellence: Equipped with a Jet-pulse cleaning system, AIRFILL filters guarantee thorough and efficient cleaning, ensuring your air remains pristine.

Premium Build: Crafted with precision, our filters boast a stainless-steel body and lid, ensuring durability and longevity even in the most demanding environments.

Cartridge Precision: The cartridge-type filter element ensures the highest level of filtration, removing even the finest particles from the air.

User-Friendly Design: With an easily accessible electronic card, maintenance is a breeze, allowing you to keep your filter operating at peak performance effortlessly.

Silo Connection Ready: Our filters come with silo connection flanges, providing a seamless integration into your existing systems.



ABN: 35 139 258 816

PO Box 111, Charlestown NSW 2290
Unit 7/8 Kilcoy Drive, Tomago NSW 2322
P: 1300 026 011 | E: graham@bulkquip.com.au
www.bulkquip.com.au

Optional Upgrades

Stainless Filter Tray: All AIRFILL units will have 304 stainless steel seal plate unless otherwise specified.

Custom Silo Connections: Opt for stainless silo connection flanges tailored to your specific needs, ensuring a perfect fit and maximum efficiency.

Powerful Fan Options: Choose from a range of fans, ranging from 0.75kW to 2.2kW, which can be easily mounted on the filter, enhancing air circulation and overall performance.

Hopper Units Available: Enhance your filtration setup with stand alone hopper units, providing additional storage capacity and further customisation options.

Versatile Sizing Options

AIRFILL filters are available in various body diameters – 400mm, 600mm, and 800mm – offering cleaning areas ranging from 6m² to 36m². Tailor your filtration solution to fit your unique requirements.

Upgrade your air filtration experience with AIRFILL Cylindrical Body Filters – the perfect blend of innovation, reliability, and performance. Request a quote today and breathe easier with AIRFILL.

Product Code Key

AIRFILL	I	12	1,1
1	2	3	4

1	Unit Code
----------	-----------

2	Type
----------	------

3	Filtering surface
----------	-------------------

4	Fan type
----------	----------

AIRFILL

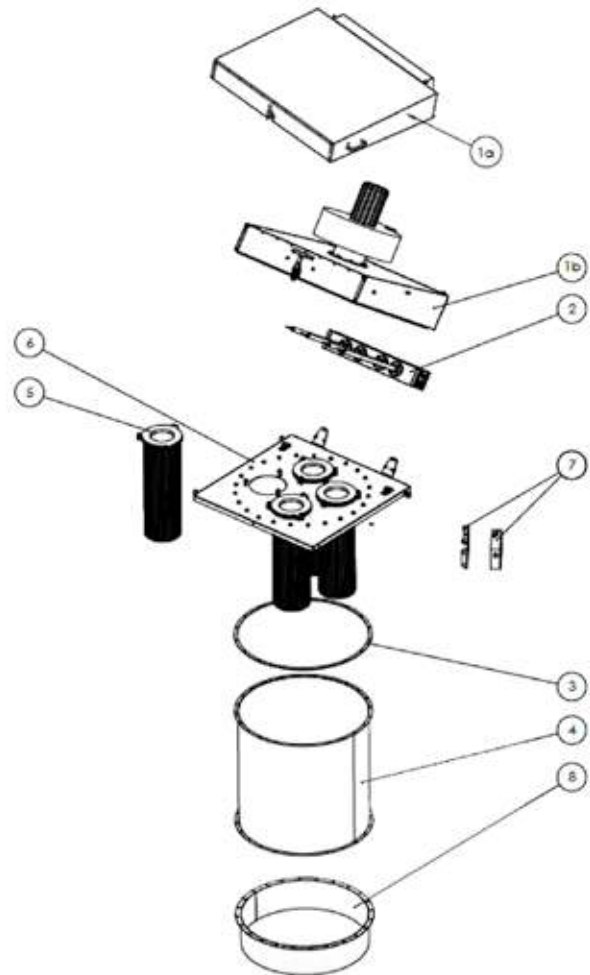
I	Interchangeable
----------	-----------------

06	6 m ²
09	9 m ²
12	12 m ²
18	18 m ²
25	25 m ²
36	36 m ²

0.75	0.75 kW
1.5	1.5 kW
2.2	2.2 kW

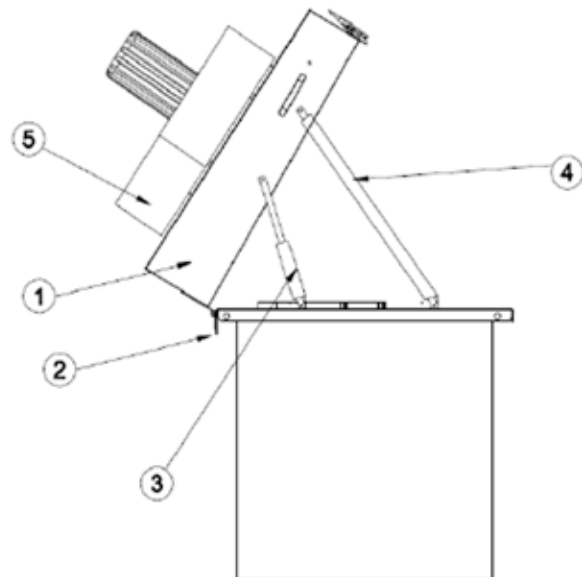
Composition

1. a) Filter cover
b) Filter cover with fan
2. Air tank
3. Gasket
4. Filter body
5. Filter element
6. Filter element plate
7. Electronic card
8. Flange

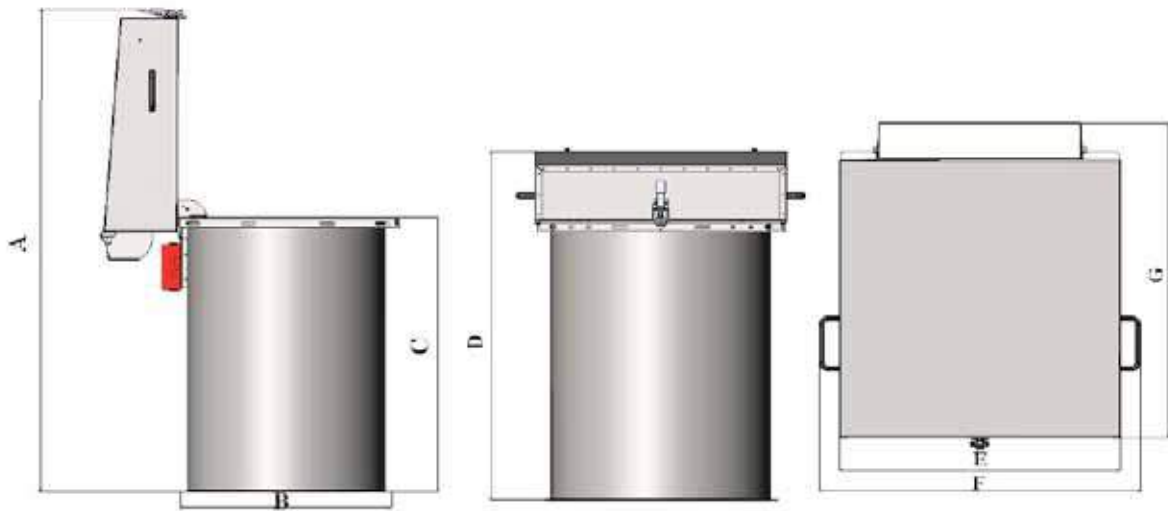


Filter with Fan

1. Upper cover
2. Hinge system
3. Spring activated lifter
4. Safety Lock
5. Filter with fan

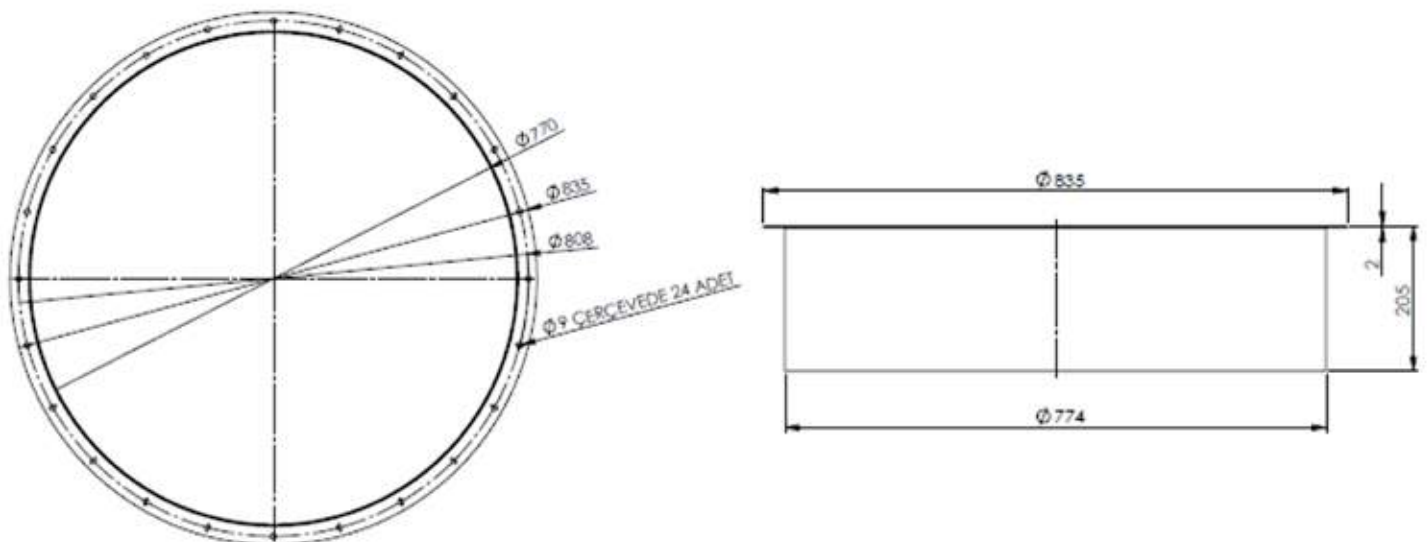


Overall Dimensions



Type	A (mm)	B (mm)	C (mm)	D (mm)	E (mm)	F (mm)	G (mm)
AIRFILL 25	1700	800	800	1050	950	1050	1010
AIRFILL 36	2000	800	1100	1350	950	1050	1010

Flange Dimensions

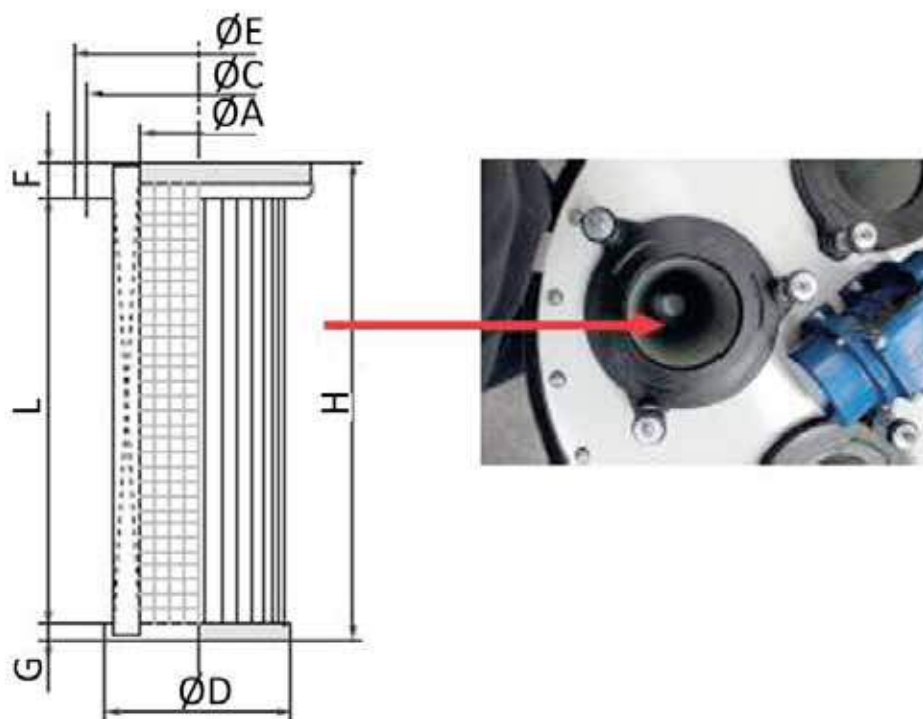


Technical Specifications

Type	Filtering Area	Element Type	Element Quantity	Valve Quantity
AIRFILL 25	25m ²	FESK218	4pcs	4pcs
AIRFILL 36	36m ²	FELK218	4pcs	4pcs



Filter Elements



Type	H (mm)	L (mm)	ØA (mm)	ØC (mm)	ØD (mm)	ØE (mm)	F (mm)	G (mm)	Filtering Surface
FESK218	710	678	145	264	218	296	20	12	6.27m ²
FELK218	1010	978	145	264	218	296	20	12	9.05m ²

Filtering Media

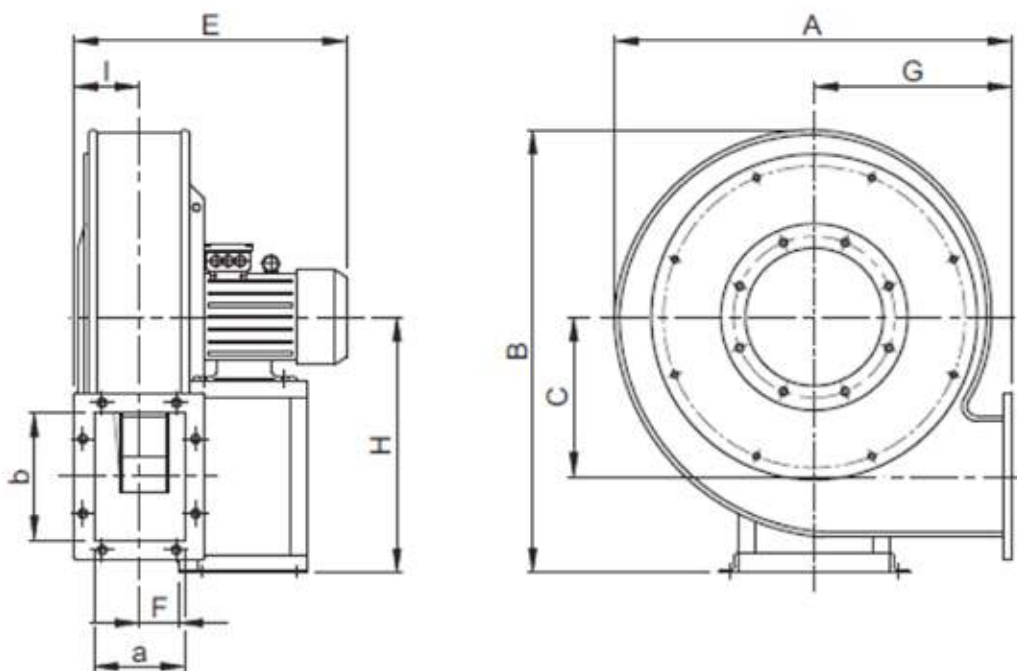
Composition	100% Spunbonded Polyester
Weight (g/m ²)	270
Thickness (mm)	0.60
Density (g/m ³)
Tensile strength md (N/5cm)	1200
Tensile strength cd (N/5cm)	600
Elongation md (%)	40
Elongation cd (%)	30
Permeability to air (m ³ /m ² h)	950 ca
Volume of pores (%)	66
BIA rating	U.S.G
Colour	White

FAN

OZB's fan applications, available in 0.75kW, 1.5kW, and 2.2kW variants, play a crucial role in directing airborne dust toward the filter, capturing it on the filter element, and releasing purified air into the atmosphere. The flexibility of fan placement—either on top or on the side with a frame—allows for optimal dust control. Adjustment of fan outlet closure enables control over the filtering speed. Fans are supplied separately and must be disassembled during transport, only assembling them once the filter is securely fixed to the frame. OZB's innovative design allows easy inspection of filtering elements by lifting the filter cover, promoting operational efficiency, and reducing initial investment.

Please kindly note that; the fan and cover can easily be opened for maintenance with fan installed. Always make sure that the locking arms are locked when the cover is open. Do not open the cover if fan and filter unit is not fixed in location.

Fan Dimensions



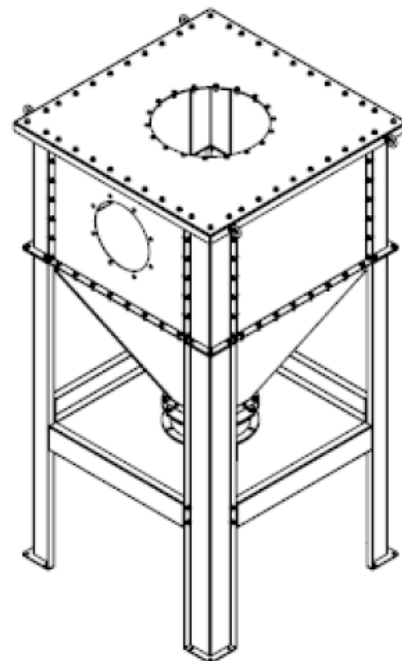
Fan Motor Power	A (mm)	B (mm)	C (mm)	E (mm)	F (mm)	G (mm)	H (mm)	I (mm)	a (mm)	b (mm)
0.75 kW	530	585	200	375	60	250	335	71	112	160
1.5 kW	580	660	230	400	67	280	375	80	125	180
2.2 kW	580	660	230	425	67	280	375	80	125	180

Hopper

Filters hoppers serve as reservoirs for collected dust and are also designed to support the filter itself.

Standard features include a single inlet, each equipped with a dust suppressing unit, and outlets with a flange for a butterfly valve.

The hoppers described in this manual are stationary and non-operating, with the producer disclaiming responsibility for system installation and operation. Qualified and authorised personnel are required for handling all aspects related to static, electrical, pressurised air, and similar elements associated with these units. Users must adhere to all safety regulations and rules applicable in use.



Hopper Code Key

FH	R	04
1	2	3

1	Unit Code
----------	-----------

FH

2	Filter Type
----------	-------------

R	AIRFILL Round Body Filter
P	FP Polygonal Body Filter

3	Filter Body Diameter/Size
----------	---------------------------

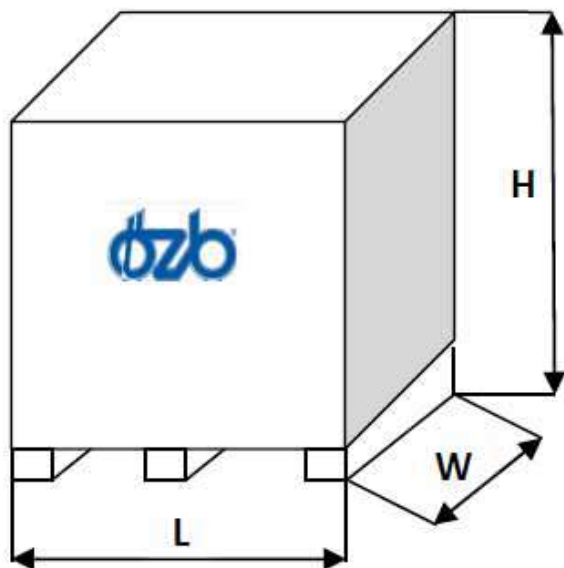
R:	04	400mm
	06	600mm
	08	800mm

P:	01	1 Size
	02	1 Size
	03	1 Size
	04	1 Size

Noise Level

75-80 dB depending on motor power and flow rate.

Wooden Box Overall Dimensions



Type	L (mm)	W (mm)	H (mm)	Net Weight (kg)	Gross Weight (kg)
AIRFILL 25	1100	1100	1150	98	120
AIRFILL 36	1100	1100	1500	105	130